

SAVINA

DOWNTOWN SAN DIEGO

HOME

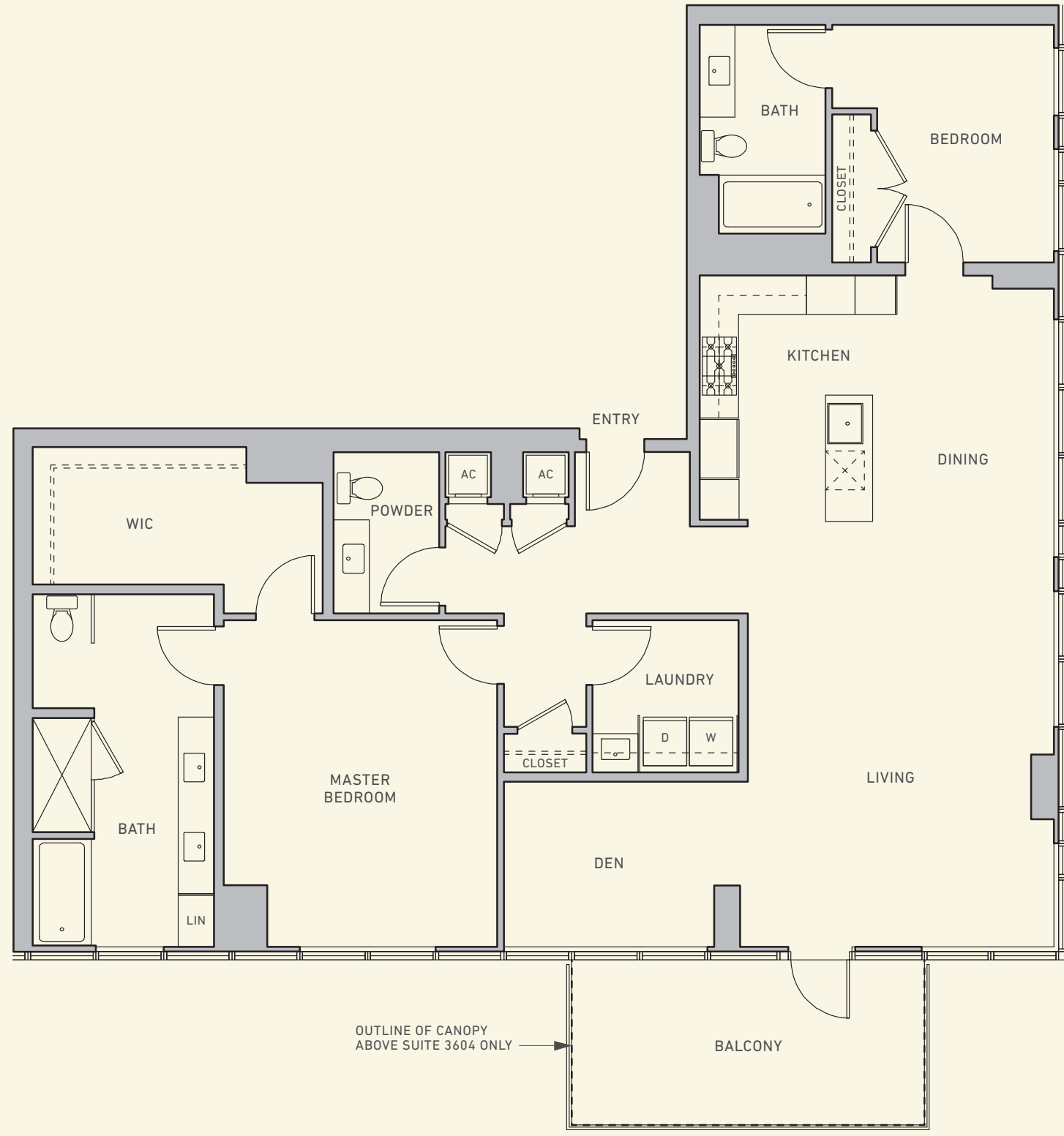
3504-3604

2 Bedroom + Den, 2.5 Bath
Approx. 1,840 SQ FT

PENTHOUSE FINISHES AND FEATURES

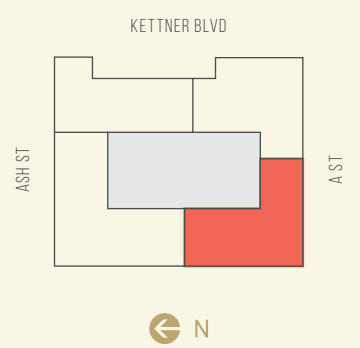
- Custom designed walnut entry door and paneling
- 7' Solid core interior doors
- Beautiful 5" hardwood floors throughout
- Generous walk-in closet
- Expansive windows for stunning city and bay views
- European-inspired kitchen featuring polished quartz countertops, drawer organizers and deep drawer lighting
- High-performance Gaggenau appliances
- Full height Thermador custom-framed wine fridge
- Designer Grohe faucets and fixtures
- Luxurious master bathrooms with porcelain tile walls and flooring and Robern medicine cabinets
- Smart home Elan Touch Pad
- MechoShade motorized window treatments
- Side-by-side built-out laundry area
- Private tiled balcony
- Three designated parking spaces
- Onsite resident storage

SAVINABYBOSA.COM



OUTLINE OF CANOPY ABOVE SUITE 3604 ONLY

FLOORS 35-36



This is not an offer to sell but intended for information only. Any representation as to square footage is approximate. Renderings, photography, illustrations, floor plans, amenities, finishes and other information described herein are representative only and are not intended to reflect any specific feature, amenity, unit condition or view when built. No representation and warranties are made with regard to the accuracy, completeness or suitability of the information published herein. The developer reserves the right to make modification in materials, specifications, plans, pricing, designs, scheduling and delivery without prior notice. Represented by S&P Realty Services Corp. DRE# 02012517

