

HOME

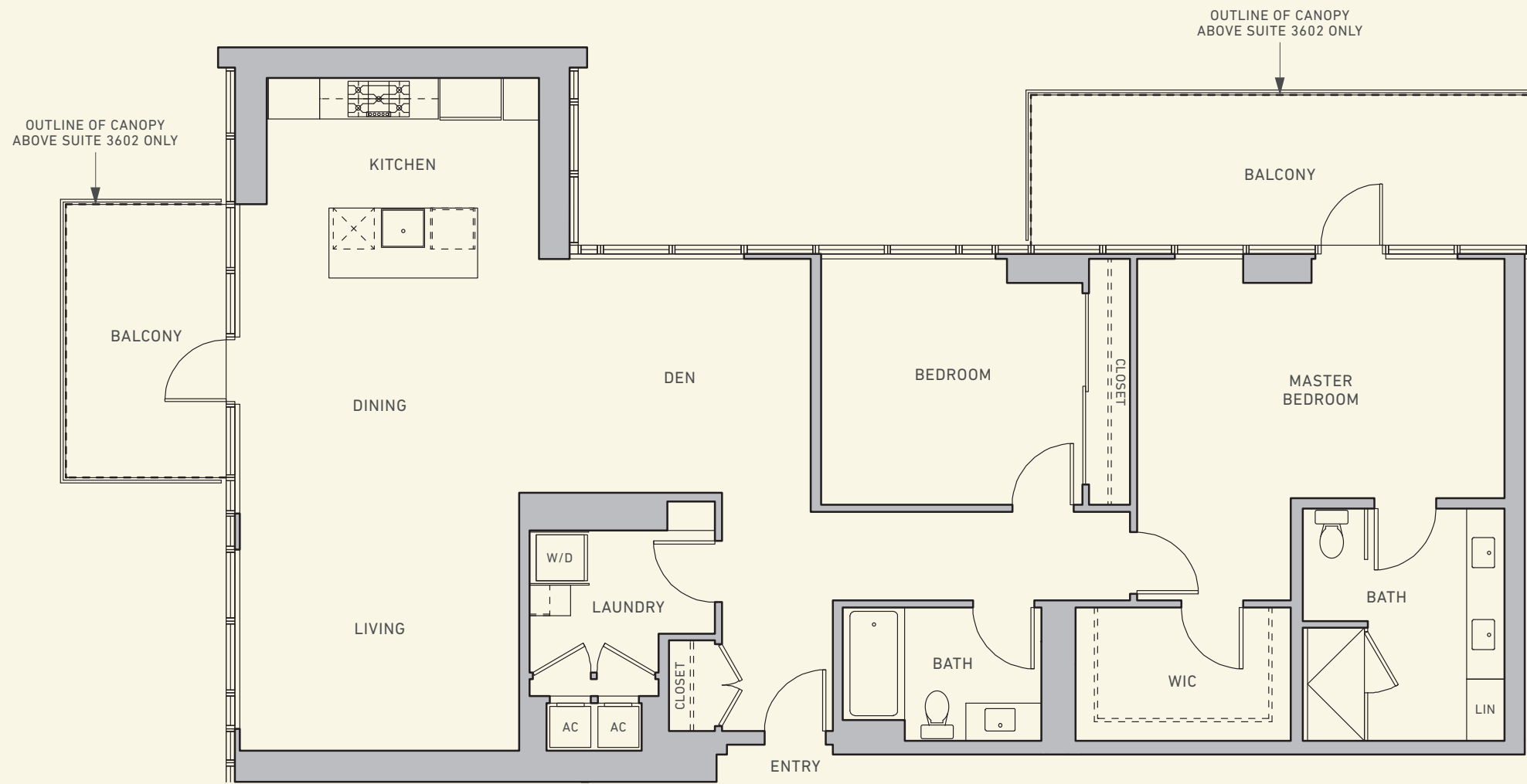
3502-3602

2 Bedroom + Den, 2 Bath
Approx. 1,715 SQ FT

PENTHOUSE FINISHES AND FEATURES

- Custom designed walnut entry door and paneling
- 7' Solid core interior doors
- Beautiful 5" hardwood floors throughout
- Generous walk-in closet
- Expansive windows for stunning city and bay views
- European-inspired kitchen featuring polished quartz countertops, drawer organizers and deep drawer lighting
- High-performance Gaggenau appliances
- Thermador custom-framed wine fridge
- Designer Grohe faucets and fixtures
- Luxurious master bathrooms with porcelain tile walls and flooring and Robern medicine cabinets
- Smart home Elan Touch Pad
- MechoShade motorized window treatments
- Built-out laundry area
- Two private tiled balconies
- Three designated parking spaces
- Onsite resident storage

SAVINABYBOSA.COM



FLOORS 35-36

